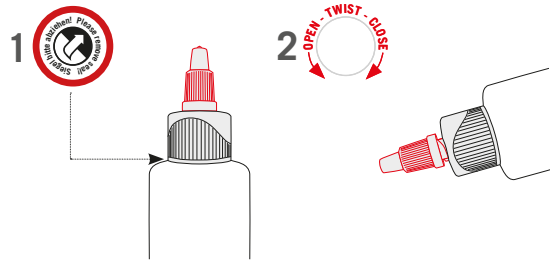


! Twist-lock

All liquid bottles are equipped with a practical Twist-lock.
First pull off the seal. The upper cap can then be easily opened or closed with one hand.
Thus, a drop-by-drop use of the liquid is possible.



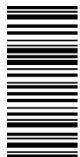
Downloads:

Instruction manual, Technical Data Sheet, Safety Data Sheet ...
Available for download at:
www.jensendental.de/en



Sales and Technical Support Europe:

Jensen Dental GmbH
Gustav-Werner-Straße 1
72555 Metzingen, Germany
+49 7123 92260
info@jensendental.de
support@jensendental.de
www.jensendental.de



4306020823

InSync[®] MC

Veneering Ceramic

PRETTY
COOL!

QUICK START GUIDE

English




For a perfect start.



Firing table

! The following firing temperatures are reference values and can vary according to furnace type.
For large-span bridges or solid pontics, the heating rate must be adjusted to approx. 30 °C / min.

	Starting temperature [°C]	Dry time [min]	Closing time [min]	Vacuum start [°C]	Heat rate [°C / min]	End temperature [°C]	Vacuum end [°C]	Holding time [min]	Opening time [min]
Wash firing	450	4	3	450	80	950	950	1	1
Opaque firing	450	4	3	450	80	950	950	1	1
1. Margin firing	450	3	3	450	60	900	900	1	1
2. Margin firing	450	3	3	450	60	890	890	1	1
1. Dentin firing	450	4	3	450	60	880	880	1	1
2. Dentin firing	450	4	3	450	60	870	870	1	1
Correction firing *	450	4	3	450	60	800	800	1	1
Glaze firing without glazing material	450	---	3	---	55	860	---	1	1
Glaze-/Stain firing with glazing material	450	4	3	600	50	780	780	1	1

*Correction firing with correction material.



Shade combination tables

Shade	A1	A2	A3	A3,5	A4	B1	B2	B3	B4	C1	C2	C3	C4	D2	D3	D4
Opaque	A1	A2	A3	A3,5	A4	B1	B2	B3	B4	C1	C2	C3	C4	D2	D3	D4
Margin	A1	A2	A3	A3,5	A4	B1	B2	B3	B4	C1	C2	C3	C4	D2	D3	D4
Opaque Dentin	A1	A2	A3	A3,5	A4	B1	B2	B3	B4	C1	C2	C3	C4	D2	D3	D4
Dentin	A1	A2	A3	A3,5	A4	B1	B2	B3	B4	C1	C2	C3	C4	D2	D3	D4
Enamel	57	58	58	60	60	57	58	59	60	58	58	59	60	57	58	59

Shade	BLEACH 1	BLEACH 2	BLEACH 3	BLEACH 4
Opaque	A0	B0	A0	A0 / B0
Opaque Dentin	BL1	BL2	BL3	BL4
Dentin	BL1	BL2	BL3	BL4
Enamel	BL	BL	BL	BL